

NEW

# PELLET STOVE SUBTILE SC8 DUCTED

Remote



190  
m<sup>3</sup>



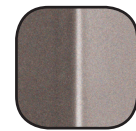
Colour



White



Bordeaux



Flecked Grey

DUCTED



## TECHNICAL DATA

## SC8 Ducted

Heat input (max - min)	kW	8,02 - 3,04
Nominal heat output (max - min)	kW	7,48 - 2,92
Pellet consumption (max - min)	kg-h	1,64 - 0,62
Efficiency (max - min)	%	<b>95,93</b> - 93,98
Smoke outlet tube	ø mm	80
Tank capacity	Lt-Kg	15 - 10
Autonomy (max - min)	h	16 - 6
Nominal power input	W	100 - 300
Dimensions (W x D x H)	mm	885 x 249 x 890
Net weight	Kg	80

All data and pictures are indicative and provisional and subject to change without notice.

**15a B-VG**

Certification for environment  
respect and protection

**CE**

Marking CE

**EN-14785**

European standard for  
heating appliances



Swiss Cantonal Association  
for Fire Safety



**TÜV Rheinland®**

European certification  
for product quality