

Mod.

WDE-K40

Woltmann
Woltmann type



Disponibile versione
acqua calda 30-90°C
Available version
for hot water 30-90°C

ITA mod. WDE-K40

Woltmann orizzontale a meccanismo estraibile. Orologeria sigillata con trascinamento magnetico a lettura diretta su rulli numeratori. Utilizzo per industria ed irrigazione. Materiali di prima qualità resistenti alla corrosione.

ENG mod. WDE-K40

Horizontal Woltmann with removable insert. Sealed counter mechanism with magnetic transmission. Direct reading on numerical rolls. Use for industry and irrigation. First quality materials resistant to corrosion.

ESP mod. WDE-K40

Woltmann horizontal con tambor extraíble. Relojería sellada de arrastre magnético y lectura directa en los rodillos numerados. Utilización en industria y riego. Materiales de primera calidad y resistentes a la corrosión.

DEU mod. WDE-K40

Horizontaler "Woltmann" mit herausziehbarer Trommel. Versiegeltes Uhrwerk mit Magnetmitnahme. Direktablesung auf Zahlrollen. Nutzbar für Industrie und Bewässerung. Qualitativ hochwertige korrosionsfeste Materialien.

FRA mod. WDE-K40

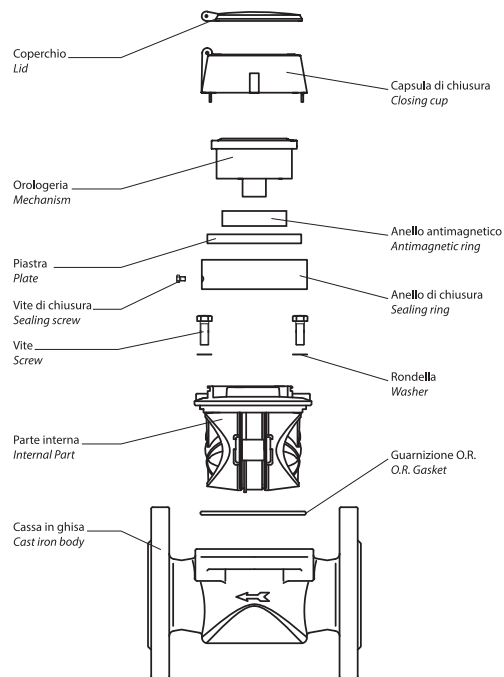
Compteur à hélice horizontale type Woltmann à tambour extractible, mécanisme de comptage étanche à transmission magnétique, lecture directe sur rouleaux numériques, utilisé pour l'industrie et l'irrigation, construction en matériaux de première qualité résistants à la corrosion.

RUS mod. WDE-K40

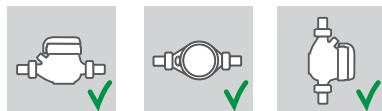
Турбинный счетчик типа Вольтман со сменной измерительной вставкой. Герметичный счетный механизм с магнитной трансмиссией. Прямое считывание с цифровых роликов. Используется в промышленности и системах ирригации. Высококачественные материалы, устойчивые к коррозии.

Caratteristiche tecniche - Technical features

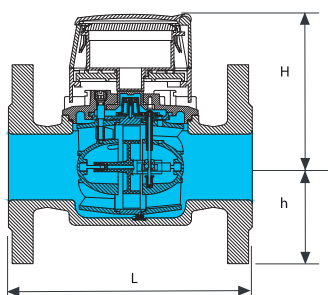
| Calibro Size | DN | mm in | 50 (2") | 65 (2"1/2) | 80 (3") | 100 (4") | 125 (5") | 150 (6") | 200 (8") |
|--|----|-------------------|---------|------------|---------|----------|-----------|----------|----------|
| Portata di sovraccarico Q ₄ Overload flowrate | | m ³ /h | 50 | 78,7 | 125 | 200 | 200 | 312,5 | 500 |
| Portata permanente Q ₃ Permanent Flow Rate | | m ³ /h | 40 | 63 | 100 | 160 | 160 | 250 | 400 |
| Portata di transizione Q ₂ Transitional flow rate | | m ³ /h | 0,64 | 1,008 | 1,6 | 2,56 | 2,56 | 4,0 | 6,4 |
| Portata minima Q ₁ Min flow rate | | m ³ /h | 0,40 | 0,63 | 1,00 | 1,60 | 1,60 | 2,5 | 4,0 |
| Letture minima Min reading | | l | 0,5 | | | | 5 | | |
| Letture massima Max reading | | m ³ | 999.999 | | | | 9.999.999 | | |
| Perdita di carico alla Q ₃ Max pressure loss at Q ₃ | | bar | 0,16 | 0,25 | 0,16 | 0,25 | 0,16 | | |
| Pressione max ammissibile Max admissible pressure MAP | | bar | 16 | | | | | | |



Posizione d'installazione Installation position



Dimensioni e pesi - Dimensions and Weights



| Calibro Size | mm in | 50 (2") | 65 (2"1/2) | 80 (3") | 100 (4") | 125 (5") | 150 (6") | 200 (8") |
|--------------|-------|---------|------------|---------|----------|----------|----------|----------|
| L | mm | 200 | 200 | 225 | 250 | 250 | 300 | 350 |
| H | mm | 123 | 123 | 149 | 147 | 274 | 311 | 365 |
| h | mm | 78 | 87 | 95 | 106 | 117 | 134 | 165 |
| Pesi Weight | kg | 7,95 | 10,10 | 14,28 | 16,50 | 20,30 | 34,00 | 45,00 |

Flange ISO 7005-2 / EN 1092-2 PN16

Versione base - Basic version

- » MID R100-HV 2004/22/CE
- » Disponibile in versione per acqua fredda 0°C-50°C e per acqua calda 30°C-90°C
- » Trasmissione magnetica
- » Lettura diretta su 6 rulli numeratori
- » Predisposizione per montaggio sistema lancia-impulsi
- » Meccanismo estraibile
- » Quadrante asciutto
- » Con coperchio
- » MID R100-HV 2004/22/CE
- » Available for cold water 0°C-50°C and for hot water 30°C-90°C
- » Magnetic transmission
- » Direct reading on 6 numeric rolls
- » Prearranged for pulse emitter device mounting
- » With removable insert
- » Dry dial
- » With lid

Su richiesta - Upon request

- » Orologeria anti-condensa
- » Protezione anti frode magnetica
- » Equipaggiato con sistema lancia-impulsi
- » Anti-condensation dial
- » Anti-magnetic fraud protection
- » Equipped with pulse emitter device

